

Trans DNA Marker II

Please read the manual carefully before use.

Cat. No. BM411

Storage: at 2-8°C for six months; at -20°C for two years

Concentration: 0.103 mg/ml

Description

Trans DNA Marker II consists of 7 linear double-stranded DNA bands., suitable for the analysis of DNA bands in agarose gel electrophoresis. It is not recommended for polyacrylamide gel electrophoresis. This product is a ready-to-use product containing 1×Loading Buffer. According to the needs of the experiment, it is easy to use by loading 5 μ l directly for electrophoresis with a clear electrophoresis image It is convenient to accurately determine the amount of target product DNA.

Composition

100 bp (60 ng/5 μ l), 200 bp (40 ng/5 μ l), 400 bp (40 ng/5 μ l), 500 bp (125 ng/5 μ l, the brightest), 700 bp (70 ng/5 μ l), 900 bp (90 ng/5 μ l), 1500 bp (90 ng/ 5 μ l)

Features

Bands form a concentration gradient of 40-125 ng, suitable for quantitative analysis of DNA fragments.

Storage Buffer

10 mM Tris-HCl (pH 8.4), 10 mM EDTA, 0.02% bromophenol blue, 5% glycerol

Instructions

- Load 5 μ l of this product to the gel lane of the agarose gel (add 1 μ l per 1 mm of the width of the gel lane, if the gel lane is wider, the loading volume can be appropriately increased) for electrophoresis.
- Recommended electrophoresis conditions are 2% agarose gel, voltage 4-10 V/cm.
- The electrophoretic bands were visualized under UV light with EB or GelStain staining.

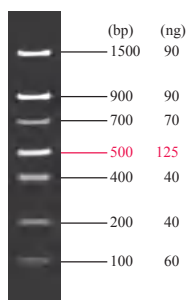
Recommended Electrophoresis Buffer

TAE, TBE

Notes

- Thoroughly thaw and mix when using.
- Change the electrophoresis buffer in time and use a freshly prepared gel to avoid affecting the results.

Trans DNA Marker II



2.0% TAE agarose gel stained with GelStain (loading volume: 5 μ l)



Recommend Agarose Gel Percentages for Trans DNA Markers

DNA Marker	Agarose	DNA Marker	Agarose
<i>Trans2K</i> [®] DNA Marker	1.5%	1Kb DNA Ladder	1.0%
<i>Trans2K</i> [®] Plus DNA Marker	1.5%	1Kb Plus DNA Ladder	1.0%
<i>Trans2K</i> [®] Plus II DNA Marker	1.5%	100bp DNA Ladder	2.0%
<i>Trans5K</i> DNA Marker	1.5%	100bp Plus DNA Ladder	2.0%
<i>Trans8K</i> DNA Marker	1.0%	100bp Plus II DNA Ladder	2.0%
<i>Trans15K</i> DNA Marker	0.8%	<i>Trans</i> DNA Marker I	2.0%
		<i>Trans</i> DNA Marker II	2.0%



FOR RESEARCH USE ONLY

