

## 100bp Plus II DNA Ladder

Cat.No. BM321

Storage: at 2-8°C for six months; at -20°C for two years

Concentration: 0.15 mg/ml

### Description

100bp Plus II DNA Ladder is a premixed, ready-to-load molecular weight marker containing eight linear double-stranded DNA fragments. The DNA Ladder is suitable for use as molecular weight standards for agarose gel electrophoresis. The DNA Ladder contains 100 bp -5.0 kb DNA fragments. The 500 bp band (100 ng/5 µl) has doubled intensity than other bands to serve as reference band.

### Highlights

- Ready-to use molecular weight marker for DNA size range of 100 bp to 5.0 kb.
- All bands from restriction enzyme digested plasmids.
- Brighter 500 bp reference band.

### Composition

100 bp, 200 bp, 300 bp, 400 bp, **500 bp**, 600 bp, 700 bp, 800 bp, 900 bp, 1,000 bp, 1,500 bp, 2,000 bp, 3,000 bp, 5,000 bp

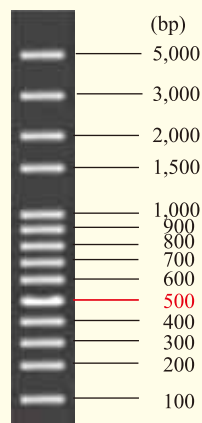
### Storage Buffer

10 mM Tris-HCl (pH 8.4), 10 mM EDTA, 0.02% bromophenol blue, 5% glycerol

### Notes

- In general, we recommend to use 1 µl 100bp Plus II DNA Ladder per mm of gel lane, or 5 µl per gel lane.
- The 100bp Plus II DNA Ladder is not intended for precise quantification of DNA mass but can be used for estimating the molecular weight of linear, double-stranded DNA fragments.
- Do not use the 100 bp Plus II DNA Ladder with polyacrylamide gels.
- For long term storage, store at -20°C. If stored at -20°C, mix well after thawing.

100bp Plus II DNA Ladder (5 µl)



2.0% TAE agarose gel stained with GelStain  
(loading volume: 5 µl)

FOR RESEARCH USE ONLY