

## *ProteinFind*<sup>®</sup> Goat Anti-Rabbit IgG(H+L), PE Conjugate

Cat. No. HS121

Storage: at 2-8°C in dark for one year

### Description

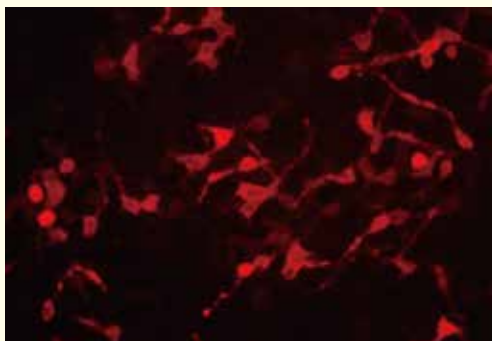
Affinity purified *ProteinFind*<sup>®</sup> Goat Anti-Rabbit IgG(H+L) Antibody is conjugated with phycoerythrin (PE) dye under optimal conditions. PE dye is a natural fluorescent dye extracted from red algae with a maximal absorption wavelength at 488 nm and a maximal emission wavelength at 575 nm. This product has been optimized for use as a secondary antibody in immunofluorescence and flow cytometry.

### Suggested Dilution

- IF: 1:100-500 dilution.
- FCM: 1:100-500 dilution.

### Notes

- Aliquot prior to use, and store in dark.
- Diluted antibody should be used within 12 hours.



Detection of fusion protein expression in HEK-293 cell by IF

FOR RESEARCH USE ONLY