

ProteinFind[®] Anti-His Mouse Monoclonal Antibody

Cat. No. HT501

Storage: at 2-8°C for one month, at -20°C for one year

Description

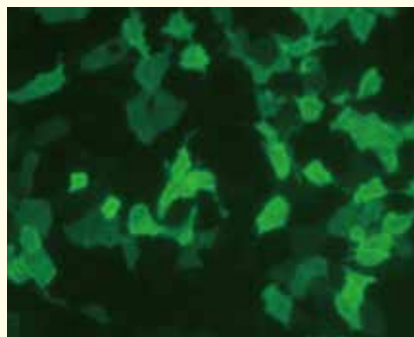
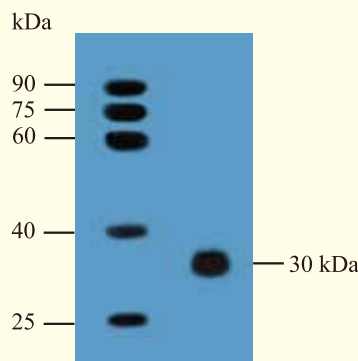
ProteinFind[®] Anti-His Mouse Monoclonal Antibody is a purified monoclonal antibody that detects recombinant proteins containing the 6×His (HHHHHH) epitope tag.

Suggested Dilution

- Western Blot: 1:500-10000 dilution.
- ELISA: 1:500-5000 dilution.
- IF: 1:100-500 dilution.
- IP: 1:100-500 dilution.

Notes

- Aliquot prior to use, and avoid repeated freezing and thawing.
- Diluted antibody should be used within 12 hours.



M: *EasySee*[®] Western Marker

Detection of His fusion protein expression in HeLa cell by WB and IF

FOR RESEARCH USE ONLY